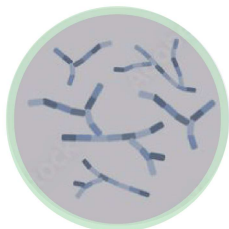




Improve emergence, root development, and defend against crop stress



- Living biological complex
- Microbial strains focused on root growth & in-season stress defense



Ca, Mg, Fe, S, Mn, Zn

- Contains key nutrients
- Placed on-seed for immediate uptake to enhance germination and early season plant vigor



- Fueled by Yield Burst
- Sources of energy for both microorganisms and plants to fuel crop performance



- Talc & graphite in an 80/20 blend
- Dries seed and improves flowability
- Replaces your current talc/graphite product

Untreated



Untreated



Initial grower trials showed consistent early season vigor across 16 states!



Guaranteed Analysis & Use-Rates

Calcium	1.0%
Magnesium	0.5%
Iron	0.1%
Sulfur	4.0%
Manganese	4.0%
Zinc	10.0%

For more information please refer to the Stride Bio label.

Crops	Stride Bio Use Rate (oz./100 pounds of seed)
Corn	6
Soybeans	3
Small Grains	1-3
Cotton	12
All Other Crops Including: Alfalfa, Canola, Dry Beans, Grain Sorghum, Peanuts, Rice, Sugarbeet, Sunflower	4

Instructions for use

- Stride Bio should be used the same way as standard graphite/talc flow agents
- For hopper boxes, best results are expected by gently stirring in Stride Bio
- For center fills, add Stride Bio in conjunction to adding seed

Grower Tested & Approved!



20/20 Monitor showed near perfect planting while using Stride Bio. - Ohio Grower

Packaging

35# Mag-Pak



Treats approx. 186 units of corn

8# Shaker
(will be grey in color)



Treats approx. 42 units of corn